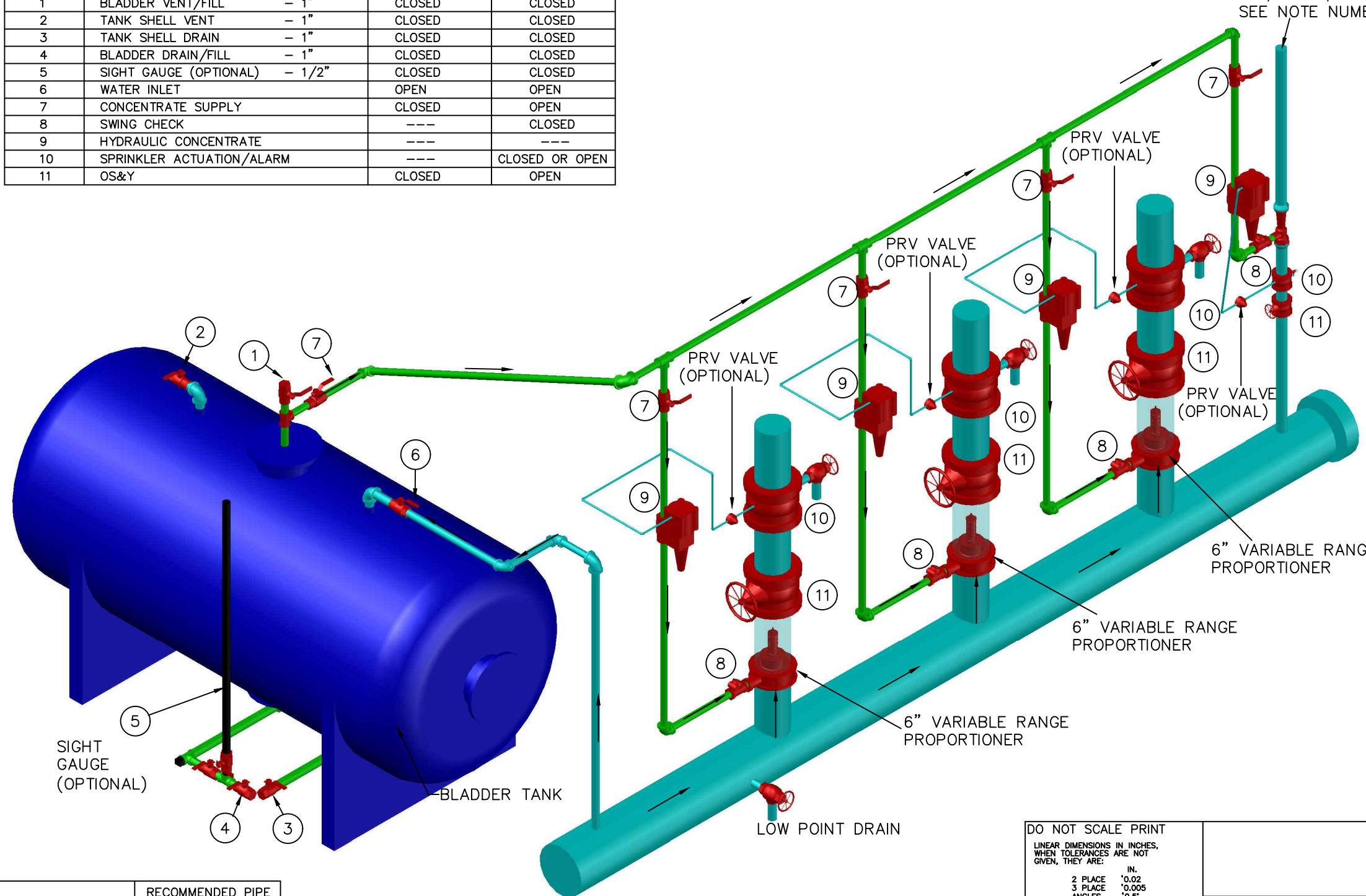


REVISIONS				
ZONE	REV	DESCRIPTION	DATE	APPROVED

VALVE NO.	VALVE DESCRIPTION	NORMAL POSITION	
		MANUAL SYSTEM	AUTO SYSTEM
1	BLADDER VENT/FILL - 1"	CLOSED	CLOSED
2	TANK SHELL VENT - 1"	CLOSED	CLOSED
3	TANK SHELL DRAIN - 1"	CLOSED	CLOSED
4	BLADDER DRAIN/FILL - 1"	CLOSED	CLOSED
5	SIGHT GAUGE (OPTIONAL) - 1/2"	CLOSED	CLOSED
6	WATER INLET	OPEN	OPEN
7	CONCENTRATE SUPPLY	CLOSED	OPEN
8	SWING CHECK	---	CLOSED
9	HYDRAULIC CONCENTRATE	---	---
10	SPRINKLER ACTUATION/ALARM	---	CLOSED OR OPEN
11	OS&Y	CLOSED	OPEN



- NOTES:
1. SPRINKLER VALVE MAY BE ALARM CHECK, DRY PIPE, PRE-ACTION, OR DELUGE TYPES AS REQUIRED BY SYSTEM DESIGN.
 2. DISCHARGE DEVICE MAY BE SPRINKLER HEADS OR OTHER TYPE DEVICE SUCH AS MONITOR NOZZLES, HANDLINE NOZZLES, OR FOAM CHAMBERS AS REQUIRED BY SYSTEM DESIGN.
 3. ARROWS INDICATE DIRECTION OF FLOW.
 4. RECOMMENDED INTERCONNECTING PIPE, FITTINGS, AND VALVE (SEE CHART, NUMBERS 6 THRU 9) SIZES TO BLADDER TANK ARE GIVEN CORRESPONDING TO PROPORTIONER SIZE.
 5. PIPE, VALVES, AND FITTINGS MAY HAVE TO BE UPSIZED TO ENSURE MINIMAL FRICTION LOSS BASED ON THE MEDIAN FLOW OF THE PROPORTIONER SELECTED. 2 PSI IS CONSERVATIVELY THE MAXIMUM PRESSURE DIFFERENTIAL BETWEEN THE WATER INLET AND THE CONCENTRATE INLET AT THE PROPORTIONER.
 6. THE HYDRAULIC CONCENTRATE VALVE (VALVE #9) MAY BE ELIMINATED ON AN AUTOMATIC SYSTEM HAVING ONE PROPORTIONER PROVIDED THE PROPORTIONER IS LOCATED AT AN ELEVATION AT OR ABOVE THE BLADDER TANK FOAM CONCENTRATE OUTLET CONNECTION LOCATED AT THE TOP OF THE TANK.
 7. A MINIMUM OF 5 PIPE DIAMETERS OF STRAIGHT PIPE MUST BE INSTALLED BEFORE AND AFTER EACH PROPORTIONER.

PROPORTIONER SIZE	RECOMMENDED PIPE FITTINGS AND VALVE SIZES
2"	1"
2 1/2"	1"
3"	1 1/4"
4"	1 1/2"
6"	2"
8"	2 1/2"

LOCAL CODES MAY REQUIRE BACKFLOW PREVENTER IN WATER FEED LINE.

DO NOT SCALE PRINT
 LINEAR DIMENSIONS IN INCHES, WHEN TOLERANCES ARE NOT GIVEN, THEY ARE:
 2 PLACE IN. .02
 3 PLACE .005
 ANGLES .5°

A.Q.L. DEFECT CLASSIFICATION ○ CRITICAL ⊕ MAJOR	USED ON	DWG.	REQ'D
	THE SOLBERG COMPANY 1520 BROOKFIELD AVE. GREEN BAY, WI 54313		
THIS DRAWING IS THE PROPERTY OF THE SOLBERG COMPANY AND SHALL NOT BE USED, REPRODUCED, OR TRANSFERRED WITHOUT ITS EXPRESS PERMISSION.	DATE	6/15/21	
	DRAWN BY	EXAMPLE DRAWING OF SINGLE HORIZONTAL BLADDER TANK TO THREE VARIABLE RANGE PROP AND 2" THREADED PROP.	
SCALE	CHECKED BY	APPROVED BY	
NO SCALE	LOCATION	SHEET 1 of 1	
GREEN BAY, WI	DRAWING NUMBER	EXAMPLE	
	REV.	0	